

Cross Forest

INEA/CEF/ICT/A2017/1566738

www.crossforest.eu



Co-financed by the Connecting Europe Facility of the European Union



Strategy for Environmental Open Data publication in Spain

Elena Robla González

Forest Inventory and Statistics Department
Subdirectorate-General for Forest Policy and to Combat Desertification
Ministry for Ecological Transition and Demographic Challenge(MITERD)



FOREST ECOSYSTEMS



Source of natural resources

Essential services providers

Strategic importance as a natural carbon sink



Forests subject to risks and threats:

- Effects of climate change
- Anthropogenic pressure



Measures to promote protection and management

Quality data that reflect the conditions and evolution of the stands



cross forest

BACKGROUND: THE GREAT VALUE OF PUBLIC FOREST DATA



Spain has high quality forestry data
but complex access and exploitation!



Main objective of Crossforest:

“facilitate and increase the use of available forest databases by publishing the data in Linked Open Data format (LOD) “



Allow a coherent exploitation of existing data sources and boost the development of useful tools for all agents involved in the field of forest management and research

LEGAL FRAMEWORK

There is a boost at European level on open data and the re-use of information from the public sector (Directives [2019/1024/UE](#), [2013/37/UE](#)).

And its transpositions in Spain: [Law 18/2015, of July 9](#), amending Law 37/2007 of November 16, about the re-use of information from the public sector.

SOME DEFINITIONS:

Open data: data in an open format that **can be freely used, re-used and shared** by anyone for any purpose with the only limit, if applicable, of the requirement of attribution of its source or recognition of its authorship.

Open format: means a file format that is platform-independent and made available to the public without any restriction that impedes the re-use of documents

Formal open standard: means a standard which has been laid down in written form, detailing specifications for the requirements on how to ensure software interoperability;

PUBLICATION PROCESS in LOD

Used of standards

“Species check list”
(Listas patrón)

Cross-walks
(Pasarelas)

Ontologies
geoSPARQL

Standardise

We refer to entities in
the same way as
other people or
Administrations
URI / ID

Publish

Disseminate the work
done:

Data.europa.eu

Datos.gob.es

Dados.gov.pt

data.europa.eu
The official portal for European data

datos.gob.es
reutiliza la información pública

dados.gov
Portal de dados abertos da Administração Pública

SG FOREST POLICY AND THE TO COMBAT DESERTIFICATION (MITERD) IN CROSSFOREST

The **Subdirectorato-General of Forest Policy and to Combat Desertification (MITERD)** is responsible, among others functions, for the **collection, digitization and preparation of forestry information** to maintain and update Spanish forestry databases

Role of MITERD in CrossForest : **data provider, expert advice and advice on the design of the models**

Forest Inventory and Statistics Department

Timber and biodiversity data:
source **NFI**
Vegetation cartography: source
SFM
Land use: source **SFM "Quick review"**

Forest Actions and Combat Desertification Department

Soil erosion:
source **NISE**

Defence against forest fires Department

Forest fires:
source **GFFS**



Available in Crossforest:
IFN3

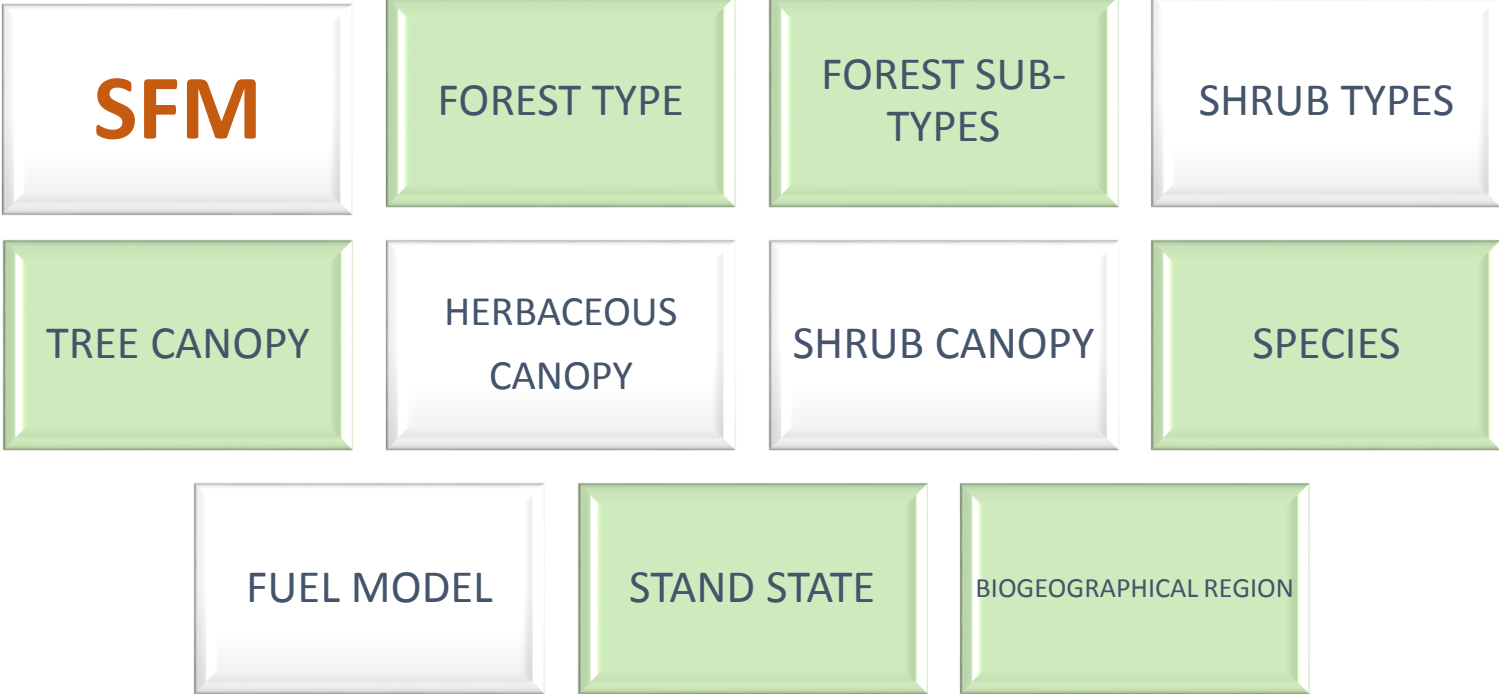
SPANISH FOREST DATA IN CROSSFOREST

NFI	BIOTOPE STATUS	DENDROMETRY	SPECIES
FOREST MENSURATION	AGES DISTRIBUTION	FORESTRY USE	BIOMASS AND CARBON SECUESTRATION
SHRUB RICHNESS	FUEL MODEL	BIODIVERSITY	DEAD WOOD



Available in Crossforest:
MFE50

SPANISH FOREST DATA IN CROSSFOREST



Available in Crossforest:
NISE: 3 types of erosion

NISE

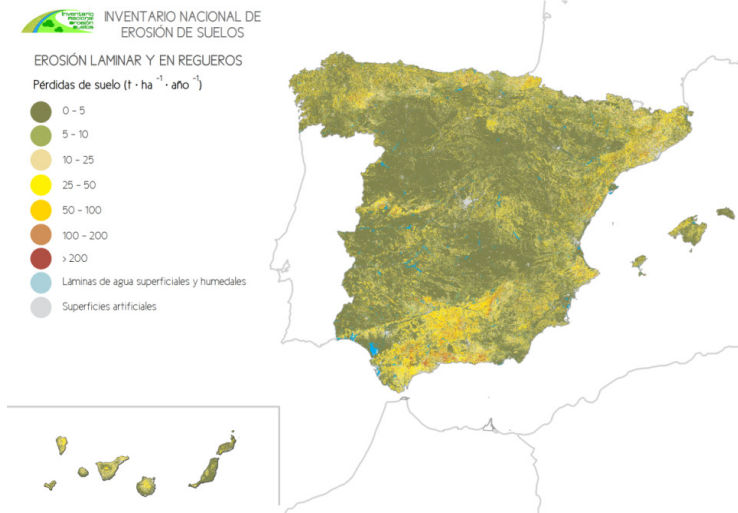
**RILL AND INTERILL
 EROSION**

GULLY EROSION

**MASS MOVEMENTS
 HAZARDS**

**STREAM-BED
 EROSION**

WIND EROSION





SPANISH FOREST DATA IN CROSSFOREST

GFFS: Information available between 1983-2015, except position (coordinates) 2005-2015



Localización


Comunidad Autónoma: CASTILLA Y LEON
Provincia: LEON
Municipio: BENUZA
Comarca / Isla: TRUCHAS

Entidad Menor:
Paraje: LAS CHOZAS
Municipios Afectados: 1
Puntos Inicio Incendio:
U.T.M. Huso: X: Y: Datum: ETRS89 Hoja: 0302 Cuadrícula: D04

CONCLUSIONS: PUBLICATION IN LOD

- LOD technology allows building an **open, public and quality information** infrastructure in a **modular and interconnected** way
- It allows Public Administrations to comply with their **transparency obligations, optimize resources and keep a statistical control of the use** of the information
- It **facilitates the access and exploitation** of the large amount of data produced to all the agents involved in forest management
- It allows any user with the appropriate profile to **launch queries and develop tools** adapted to their needs, for management and decision support
- But, **“consume open data” is not easy** → create intermediate links and multidisciplinary teams





INEA/CEF/ICT/A2017/1566738



**Co-financed by the Connecting Europe
Facility of the European Union**

www.crossforest.eu